



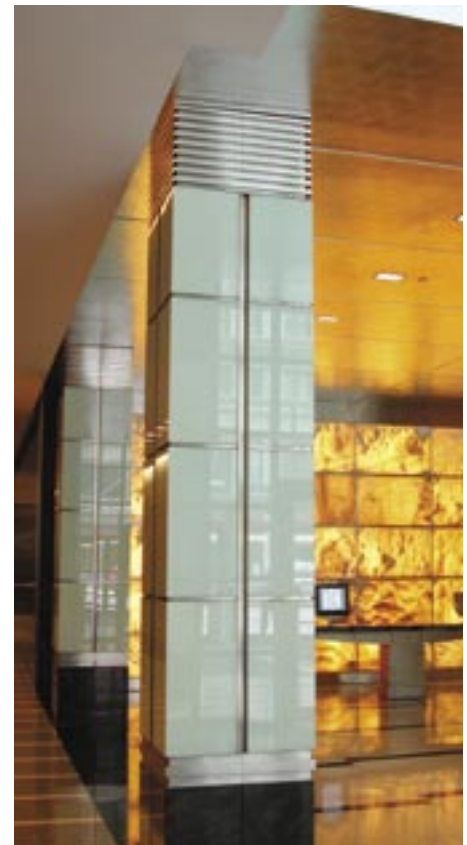
Graphic Onyx-Walled Lobby with Stainless Framing, and Column Trims

***Fire-red onyx and steel
trimmed glass columns
creates a lasting impression
in entrance lobby.***

For the lobby of 10 St. James, Weiss craftsmen created individual frames for each piece of onyx and then secured the single frames into a final supporting frame to accomplish the project. In this way, a single piece of onyx may be removed if there is ever a problem with stone breakage.

Weiss worked closely with the contractor to make a supporting frame which would carry the 1/2" stone, but not overwhelm it. The resulting frame is light in appearance but possess the strength and durability of stainless steel.

The unique columns were trimmed in horizontal stripes of stainless which acted as accent trim and also supported glass column covers.



Architect:
S.O.M.
Customer
K&G Entrances

Contractor
Bovis Contracting
Product:
Stainless Steel
Location:
Boston, MA



Weiss Sheet Metal, Inc.

Custom Stainless Steel & Aluminum Fabrication

105 Bodwell Street, Avon, MA 02322
t: 508-583-8300 • f: 508-588-5690

www.weiss-sheetmetal.com
e: wdelano@weiss-sheetmetal.com